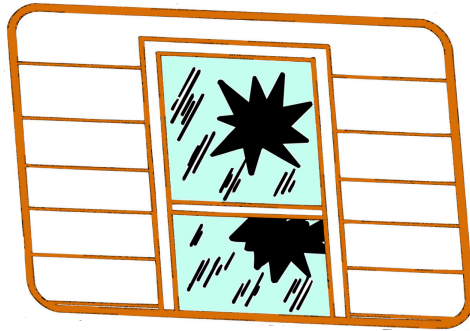


The Second Story Window



Arr: Gilbert DeBenedetti

3

Old Mo - ther Hub - bard, she went to the cup - board To

1
5

3

Musical notation for the first system of the piece. It consists of a grand staff with a treble clef on the top staff and a bass clef on the bottom staff. The time signature is 3/4. The melody is written in the treble clef, and the accompaniment is in the bass clef. The lyrics are written below the treble staff. There are fingerings 1, 5 and 3 indicated below the bass staff.

5

4

stretch!

1

fetch her poor dog a bone, But

4

1

Musical notation for the second system of the piece. It consists of a grand staff with a treble clef on the top staff and a bass clef on the bottom staff. The time signature is 3/4. The melody is written in the treble clef, and the accompaniment is in the bass clef. The lyrics are written below the treble staff. There are fingerings 4 and 1 indicated below the bass staff. A red 'stretch!' annotation is placed above the treble staff over the final two notes of the system.

9

2

2

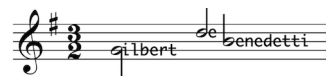
when she got there the cup - board was bare, She

2

1

Musical notation for the third system of the piece. It consists of a grand staff with a treble clef on the top staff and a bass clef on the bottom staff. The time signature is 3/4. The melody is written in the treble clef, and the accompaniment is in the bass clef. The lyrics are written below the treble staff. There are fingerings 2 and 1 indicated below the bass staff.

More sheet music at:
www.gmajormusictheory.org



13 ⁵/₁ ³

threw it out the win - dow! The win - dow, the

1 2 5 1

19 ¹

se - cond - sto - ry win - dow, But when she got there the

1

2

25 ⁵/₁

cup-board was bare, She threw it out the win - dow!

1 2 3 5

2. Little Miss Muffet, she sat on a tuffet,
 Eating her curds and whey,
 Along came a spider
 Who sat down beside her,
 She threw him out the window!
 The window, the second story window,
 Along came a spider
 Who sat right down beside her,
 She threw him out the window!

