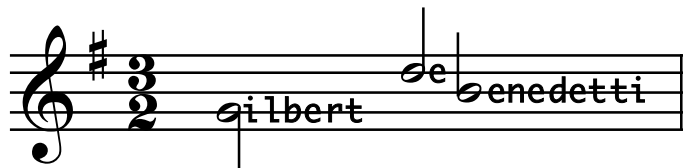


Harmonic Dictation

by Gilbert DeBenedetti



www.pitt.edu/~deben

Solutions

Contents

CD ONE

1. Cadences 2

CD TWO

2. Elaborations with triads 4
A. Expanding the initial tonic
B. Expanding intermediate and harmonies
3. vi preceding intermediate harmonies 6

CD THREE

4. Dominant Sevenths in Root Position 7

CD FOUR

5. Inversions of Dominant Sevenths 10
6. Leading Tone Seventh Chords 11
7. A Secondary Dominant, V7 / V 12

www.pitt.edu/~deben
www.gmajormusictheory.org

Harmonic Dictation I: Cadences Solutions

Initial tonic orients the listener to the key; it is not part of the cadence.

1. Perfect Authentic 2. Perfect Authentic 3. Perfect Authentic 4. Imperfect Authentic

I V I I V I I V I I V I

5. Imperfect Authentic 6. Imperfect Authentic 7. Imperfect Authentic 8. Imperfect Authentic

I V⁶ I I V⁶ I I V I⁶ I⁶ vii^{°6} I

NOT vii[°] **NOT** vii[°]

9. Plagal 10. Plagal 11. Deceptive 12. Deceptive

I IV I I IV^¼ I I V vi I V vi

13. Deceptive 14. Half 15. Half 16. Half

I V⁶ vi I I V I I⁶ V I V⁶

17. Perfect Authentic with Cadential ♯

18. Perfect Authentic with Cadential ♯

19. Half with Cadential ♯

33 Two ways to notate. These pages use I₄ V.

I I₄ V I I I₄ V I I I₄ V

OR
V₄ 5

In cadences 20 - 26, V and Cadential ♯ chords are preceded by the intermediate harmonies, ii, ii₆ or IV.

41 20. 21.

I IV V I I ii V I

47 22. 23. 24.

I ii₆ V I I IV V I ii₆ V

54 25. Phrygian Half 26.

a: i iv₆ V# I ii₆ I₄ V I

