

**ANSWERS TO CHAPTER ONE,
PATHWAYS TO HARMONY**

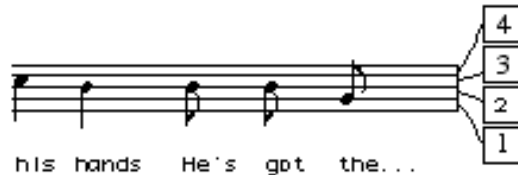
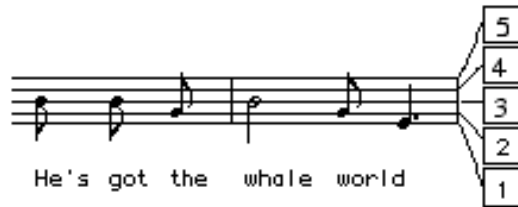
By Gilbert DeBenedetti

www.gmajormusictheory.org

1.2



1.3



1.4

1. A staff is a set of five lines and four spaces.
2. The note letters are A, B, C, D, E, F, G

3. A clef is a symbol which identifies a line and space with a letter.

4. The G or treble clef identifies the second line as the note G above the piano's middle C.

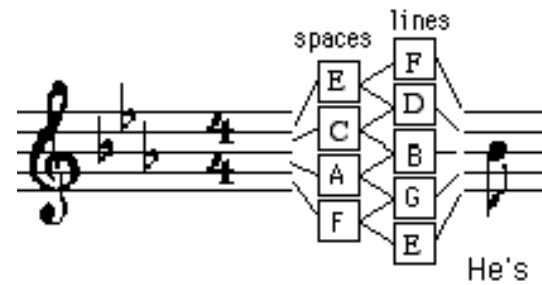
5.



6. higher

7. lower

1.5



1.6

1. D E D C B C D, A B C, B C D
2. G C E D C A A G G C, D E D E D C A
- 3.



1.7

- 1. Quarter
- 2. quarter
- 3. half
- 4. Whole



1.8

1.

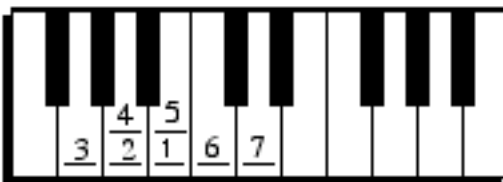


2.



Praise God from Whom all bless-ings flow

3.



1.9

- Q Q H Q Q H Q Q Q Q W
- B B B B B B B D G A B



Jin-gle bells, Jing-le bells, Jin-gle all the way,

- Q Q Q Q Q Q Q Q Q Q Q Q H H
- C C C C C B B B B A A B A D



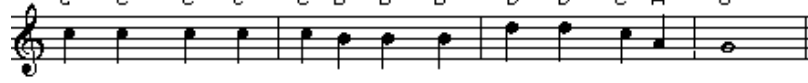
Oh, what fun it is to ride a one horse o-pen sleigh—,

- Q Q H Q Q H Q Q Q Q W
- B B B B B B B D G A B



Jin-gle bells, Jing-le bells, Jin-gle all the way,

- Q Q Q Q Q Q Q Q Q Q Q Q W
- C C C C C B B B D D C A G



Oh, what fun it is to ride a one horse o-pen sleigh.