

# The Rooster Crows, "What a Pretty Day"



Gilbert DeBenedetti  
*Brightly*

1 *Loud and long*

*f* 5  
Cock - a - doo - dle - doo!

1

1 *Brightly*  
Wake up the

6

3 sun is ris - ing

5 3

1 What a pret - ty day, Come out and start to

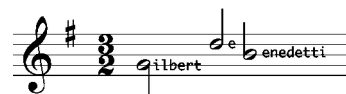
11

play, Wake up the sun is ris - ing, What a pret - ty

16

day to day, to - day. The sun is glow - ing red, come

More sheet music at:  
[gmajormusictheory.org](http://gmajormusictheory.org)



21

2 4 *rit.* 1

out get out of bed, The dew is on the hay, come out come

25

A Tempo

2 2 1 2 3

out and greet the day. Come out the sun is

29

5 3 1 5

ris - ing What a pret - ty day to day, to -

33

Loud and long again

3 1 5 1

day. Cock - a - doo - dle - doo!

More sheet music at:  
[gmajormusictheory.org](http://gmajormusictheory.org)





# Reflections of Hawaii

The left hand notes reflect each other symmetrically on the keyboard above and below the right G's and A's.

Gently shimmering Gilbert DeBenedetti

*mp* *l.h.* *r.h.* *l.h.* *r.h.* *l.h.* *hand crossing simile*

*simile*

*p* *left hand over*



More sheet music at:  
[www.gmajormusictheory.org](http://www.gmajormusictheory.org)

10

10-12: Bass clef system. Measure 10: *cresc.* 1, 5. Measure 11: 5, 1. Measure 12: 1, *mf*, 5.

13

13-15: Treble clef system. Measure 13: *p*, 2, 3. Measure 14: *cresc.*. Measure 15: *mf*.  
 13-15: Bass clef system. Measure 13: 5, 1. Measure 14: 1. Measure 15: 1. *left hand over*

16

16-18: Treble clef system. Measure 16: *rit.*, 4, 1. Measure 17: *A Tempo*, *mp*. Measure 18: *mp*.

19

19-21: Treble clef system. Measure 19: *rit.*. Measure 20: *l.h.*, *r.h.*, *l.h.*. Measure 21: *l.h.*, *r.h.*, *l.h.*, 3, 2, 1, 5, *r.h.*

Small musical notation snippet: Treble clef, key signature of one sharp (F#), 3/2 time signature. Notes: G4, A4, B4, C5. Text: Gilbert Benedetti.