

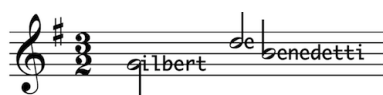
Musette

From the Notebook of
Anna Magdalena Bach

Moderato

The musical score for 'Musette' is presented in two systems, each with a grand staff (treble and bass clefs). The key signature is two sharps (D major), and the time signature is 2/4. The tempo is marked 'Moderato'. The score is divided into measures, with some measures containing fingerings (1-5) and articulation marks. The dynamics range from *f* (forte) to *p* (piano). The piece concludes with a repeat sign and a final cadence.

More *FREE* music at:
www.gmajormusictheory.org



Musette p.2

14

cresc.

17

4 2 1 4 3 1 4
1 3 2 1 5 2

20

f

23

p *f*

26