

Chapter 10 Triads

In this chapter you will:

- | | |
|---|--|
| 1. Identify major and minor triads | 5. Identify triads with key signatures |
| 2. Write major and minor triads | 6. Write triads given the third or fifth |
| 3. Identify all four types of triads | 7. Review the four triads |
| 4. Identify triads by sound and write triads given the root | |

10.1 Identify major and minor triads

<p>major triad minor triad</p>	<table border="1" style="border-collapse: collapse;"> <tr> <td></td> <td colspan="2" style="text-align: center;">type of triad</td> </tr> <tr> <td></td> <td style="text-align: center;">major</td> <td style="text-align: center;">minor</td> </tr> <tr> <td rowspan="2" style="font-size: 2em; vertical-align: middle;">{</td> <td style="text-align: center;">top 3rd</td> <td style="text-align: center;">minor</td> </tr> <tr> <td style="text-align: center;">bottom 3rd</td> <td style="text-align: center;">major</td> </tr> <tr> <td></td> <td style="text-align: center;">5th</td> <td style="text-align: center;">perfect</td> </tr> </table> <p>interval</p>		type of triad			major	minor	{	top 3rd	minor	bottom 3rd	major		5th	perfect
	type of triad														
	major	minor													
{	top 3rd	minor													
	bottom 3rd	major													
	5th	perfect													

- A chord is three or more notes played together.
 - A triad is a three note chord which is written in thirds.
 - There are four types of triads. This worksheet presents two of these:
 - A major triad has a major third on the bottom and a minor third on top.
 - A minor triad has a minor third on the bottom and a major third on top.
- The 5ths, from the bottom notes to the top notes, in both triads are perfect, so 5ths cannot be used to distinguish these two triads.
- "Major" and "minor" are used to describe both intervals and triads.
- Major and minor triads are named after their bottom thirds.

1. IDENTIFY the bottom third of the triad as major or minor.

2. IDENTIFY the top third of the triad as major or minor.

3. IDENTIFY the triad as major or minor.

Date: _____

10.2 Write major and minor triads

Problem: Write a major triad above this root.

- The bottom note of a triad is called the root.
- To write major and minor triads given the root:
 1. First write two noteheads above the root in thirds.
 2. Alter the middle note if necessary to make the bottom third major (for a major triad), or minor (for a minor triad).
 3. Alter the top note if necessary to make the top third minor (for a major triad), or major (for a minor triad).

1. WRITE major triads above these roots.

Example

2. WRITE minor triads above these roots.

Example

3. WRITE triads on the bottom staff as indicated.

When John-ny comes march-ing home a-gain, Hur-rah, Hur-rah.

min maj maj maj min

This phrase can be played as a duet.

10.3 Identify all four types of triads

		type of triad			
		major	minor	diminished	augmented
interval	top 3rd	minor	major	minor	major
	bottom 3rd	major	minor	minor	major
	5th	perfect	perfect	diminished	augmented

← NEW

- Diminished triads have two minor thirds and a diminished fifth.
- Augmented triads have two major thirds and an augmented fifth.
- Diminished and augmented triads are named after their fifth. (Recall that major and minor triads are named after their bottom third.)
- All four types of triads can be distinguished by their thirds alone.
You can figure out the fifth to check your work.

1. MEMORIZE the chart above.

2. IDENTIFY these triads.

Example



Aug _____



2. IDENTIFY the triads on the bottom staff.





Date: _____

10.4 Identify triads by sound and write triads given the root

- To identify triad types by their sound, these associations might be helpful:

Major: Birthday party	Diminished: Halloween
Minor: Funeral	Augmented: Science Fiction Film
- Recall from worksheet 10.2 to write the noteheads in thirds before altering notes.

1. IDENTIFY triad types played by your teacher or friend.

2. WRITE triads above these roots.

Example

maj maj maj maj maj maj

Example

min min min min min min

Example

dim dim dim dim dim dim

Example

aug aug aug aug aug aug

10.5 Identify types of triads with key signatures



- Recall that the key signature will affect some notes on the staff.

IDENTIFY these triads.



This keyboard is not the same as that on page 23.



Date: _____

10.6 Write triads given the 3rd or 5th

Diagram illustrating the structure of a triad. The top part shows a triad on a treble clef staff with labels for the 5th, 3rd, and root. Below this, a sequence of four steps is shown:

- Problem: Complete this triad**: A single note on a bass clef staff with a label '5th' pointing to it. Below the staff is the label 'dim'.
- Step 1**: Two notes on a bass clef staff with a label '5th' pointing to the upper note. Below the staff is the label 'dim'.
- Step 2a**: Three notes on a bass clef staff with a label '5th' pointing to the upper note. A box labeled 'min' is placed to the right of the notes. Below the staff is the label 'dim'.
- Step 2b**: Three notes on a bass clef staff with a label '5th' pointing to the upper note. A box labeled 'min' is placed to the right of the notes. Below the staff is the label 'dim'.

- The middle note of a triad is called the 3rd. It is a 3rd above the root.
- The top note of a triad is called the 5th. It is a 5th above the root.
- To write a triad given the 3rd or 5th:
 1. Write the noteheads in 3rds. At least one notehead will be below the given note.
 2. Figure out major and minor thirds starting from the given note, not the root. Do not change the given note.

COMPLETE these triads. The given notes are either 3rds and 5ths.

Major triads to be completed:

- Measure 1: Treble clef, note on G4, label '3rd', 'major' below.
- Measure 2: Treble clef, note on A4, label '3rd', 'major' below.
- Measure 3: Treble clef, note on B4, label '3rd', 'major' below.
- Measure 4: Bass clef, note on C4, label '5th', 'major' below.
- Measure 5: Bass clef, note on D4, label '5th', 'major' below.

Minor triads to be completed:

- Measure 1: Treble clef, note on G4, label '3rd', 'minor' below.
- Measure 2: Bass clef, note on F4, label '3rd', 'minor' below.
- Measure 3: Bass clef, note on E4, label '5th', 'minor' below.
- Measure 4: Bass clef, note on D4, label '5th', 'minor' below.
- Measure 5: Treble clef, note on C4, label '5th', 'minor' below.

Diminished triads to be completed:

- Measure 1: Treble clef, note on G4, label '3rd', 'diminished' below.
- Measure 2: Treble clef, note on A4, label '3rd', 'diminished' below.
- Measure 3: Bass clef, note on B4, label '3rd', 'diminished' below.
- Measure 4: Bass clef, note on C5, label '5th', 'diminished' below.
- Measure 5: Treble clef, note on D5, label '5th', 'diminished' below.

Augmented triads to be completed:

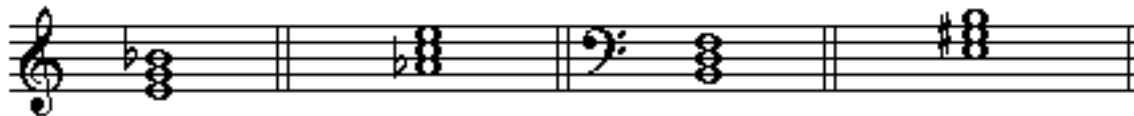
- Measure 1: Bass clef, note on G3, label '3rd', 'augmented' below.
- Measure 2: Bass clef, note on A3, label '3rd', 'augmented' below.
- Measure 3: Treble clef, note on B4, label '5th', 'augmented' below.
- Measure 4: Treble clef, note on C5, label '5th', 'augmented' below.
- Measure 5: Bass clef, note on D4, label '5th', 'augmented' below.

10.7 Review triad types

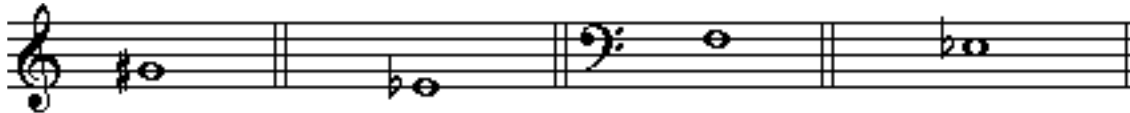
1. COMPLETE this chart.

		type of triad			
		major	minor	diminished	augmented
interval	top 3rd			minor	
	bottom 3rd				
	5th				

2. IDENTIFY these triads.

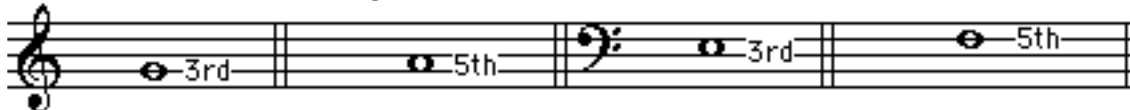


3. WRITE triads above these roots.



minor augmented diminished augmented

4. WRITE these triads given the 3rd or 5th.



major diminished augmented minor

5. IDENTIFY these triads.



