

# Chapter 1. The Keyboard and Treble Clef

In this chapter you will:

1. Play a tune on the keyboard
2. Identify notes on the keyboard
3. Write treble clefs on a staff
4. Review the material to here
5. Identify notes on the treble staff
6. Write notes on the treble staff
7. Identify whole, half and quarter notes, and draw stems on noteheads
8. Match notes on the keyboard with notes on the staff
9. Write a familiar song

Date: \_\_\_\_\_

## 1.1 Play a tune on the keyboard



- Harmony is the study of how pitches, or notes, are arranged to make music. In order to explain these arrangements it is convenient to show the keys on a piano keyboard. On the keyboard each key plays a certain pitch.
- Each white key corresponds to a letter A, B, C, D, E, F or G. The letters proceed alphabetically from A to G and then they go back to A.
- Black keys are arranged in alternating groups of twos and threes. All A's look alike in this pattern, all B's look alike and so on.

1. LABEL the remaining keys on the keyboard above.

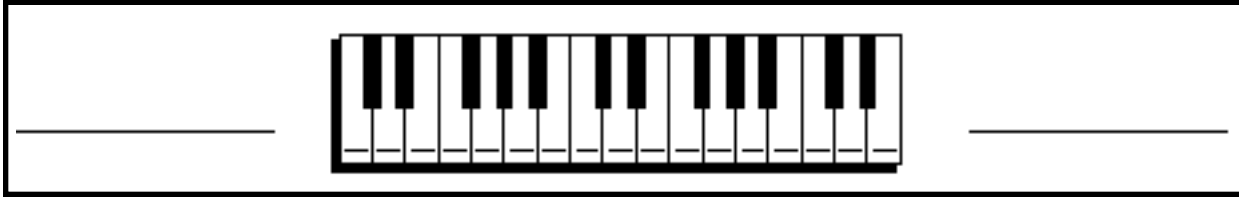
2. PLAY "Mary Had a Little Lamb" as shown below. The note letters are above the words. You can begin on any E on the keyboard.

E D C D E E E D D D E G G  
Mary had a little lamb, little lamb, little lamb,

E D C D E E E E D D E D C  
Mary had a little lamb, its fleece was white as snow.

Date: \_\_\_\_\_

## 1.2 Identify notes on the keyboard



- On the keyboard keys to the left sound low and keys to the right sound high.
- “Middle C” is often used as a reference note.
- The first G above middle C (to the right of middle C), and the first F below middle C (to the left of middle C) are also used as reference notes.

\_\_\_\_\_

1. WRITE the letter name for each white key on the keyboard above.  
This keyboard does not start in the same place as the keyboard on the previous page.
2. WRITE “high” and “low” in the correct spaces on either side of the keyboard.
3. CIRCLE the C which is closest to the middle of the keyboard.
4. CIRCLE the first G above middle C, and the first F below middle C.

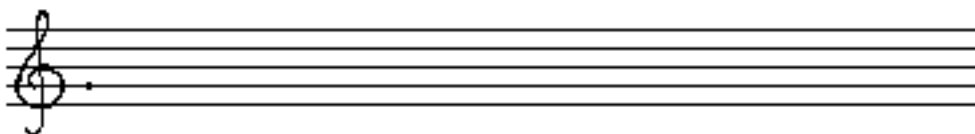
### 1.3 Write treble clefs on a staff

- Music is written on staves. A staff is a set of five lines and four spaces.
- Lines and spaces on the staff are numbered from the bottom.
- Each line and space stands for a certain pitch or note, and is given a letter A through G. These letters refer to the the letters for the keys on the keyboard.
- Each staff of music begins with a clef. A clef is a symbol which identifies a line and space with a letter.



- This symbol, , is a G or treble clef. The G or treble clef identifies the second line as the note G above the piano's middle C.

1. NUMBER the lines and spaces in the squares beside the staves above.
2. WRITE five treble clefs on the staff below. After each clef put a dot on the G line.



Date: \_\_\_\_\_

## 1.4 Review the material to here

Complete the following sentences:

1. A staff is

\_\_\_\_\_

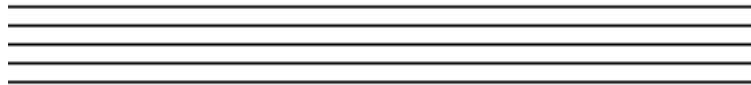
2. The note letters are \_\_\_\_\_

3. A clef is \_\_\_\_\_

4. The G or treble clef identifies

\_\_\_\_\_

5. Write two treble or G clefs. Put a dot on the fourth line.



6. Notes to the right on the keyboard sound (higher/lower) \_\_\_\_\_.

7. Notes to the left on the keyboard sound (higher/lower) \_\_\_\_\_.



Date: \_\_\_\_\_

### 1.6 Write notes on the treble staff



There is a faster way to identify the letters on a staff with treble clef:

- Notes in the spaces, starting from the bottom, spell the word FACE.
- Notes on the lines, starting from the bottom, are E G B D and F, as in Every Good Boy Does Fine.

\_\_\_\_\_

1. IDENTIFY the following notes, and learn to PLAY one of these phrases:



The Arkansas Traveler -- Traditional fiddle tune



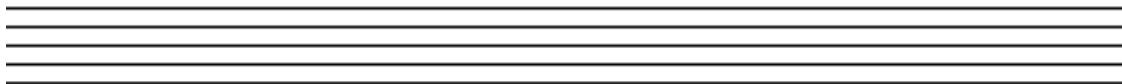
2. DRAW a treble clef at the beginning of the staff below.

3. DRAW open noteheads (without stems) for the letters above the staff.

Draw a  
treble  
clef

Welsh Lullaby

C B A C D C B G A B B C

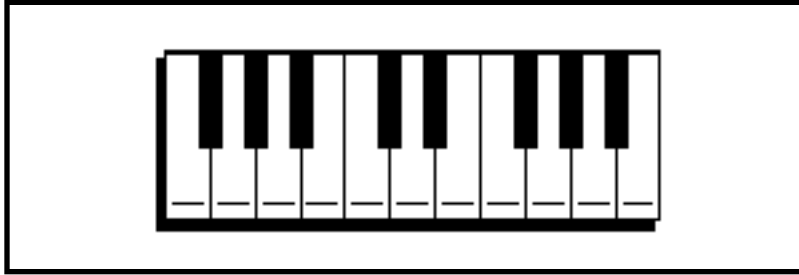


Sleep my child and peace at - tend thee, All Through the Night



Date: \_\_\_\_\_

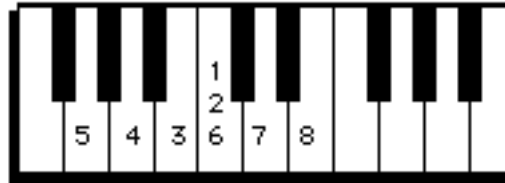
### 1.8 Match notes on the keyboard and the treble staff



1. WRITE letter names on each white key on the keyboard above.
2. WRITE quarter notes under each number according to where the number appears on the keyboard.

1 2 3 4 5 6 7 8

Praise God from Whom all bless-ings flow



2. WRITE on the keyboard the number for each note on the staff.

1 2 3 4 5 6 7

The first No - el



## 1.9 Write a Familiar Song

WRITE the treble clefs and the notes to "Jingle Bells."

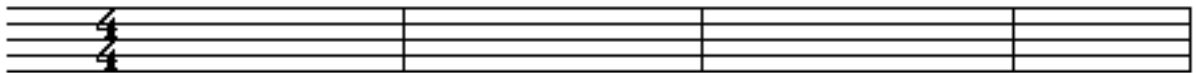
For the notes, refer to the note letters and the durations above the staves.

Durations are on the top line. Use this code to write them correctly:

Q= quarter note, H=half note and W= whole note.

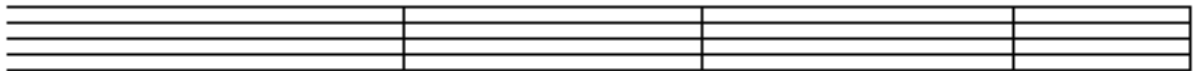


Q	Q	H	Q	Q	H	Q	Q	Q	Q	W
B	B	B	B	B	B	B	D	G	A	B



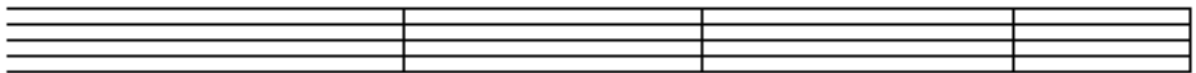
Jin-gle bells,    Jing-le bells,    Jin-gle all the way,

Q	Q	Q	Q	Q	Q	Q	Q	Q	Q	Q	Q	H	H
C	C	C	C	C	B	B	B	B	A	A	B	A	D



Oh, what fun it is to ride a one horse o-pen sleigh\_\_\_,

Q	Q	H	Q	Q	H	Q	Q	Q	Q	W
B	B	B	B	B	B	B	D	G	A	B



Jin-gle bells,    Jing-le bells,    Jin-gle all the way,

Q	Q	Q	Q	Q	Q	Q	Q	Q	Q	Q	Q	W
C	C	C	C	C	B	B	B	D	D	C	A	G



Oh, what fun it is to ride a one horse o-pen sleigh.

PLAY "Jingle Bells!"